

Glucose-6-phosphate isomerase

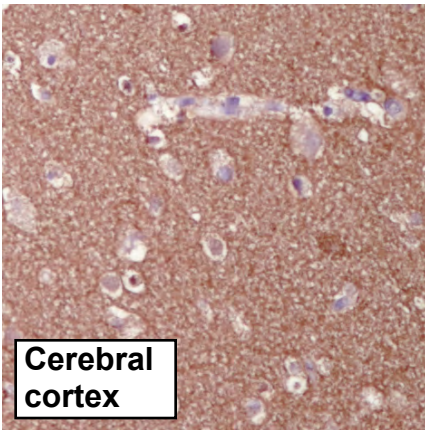
UniProt

Function: Besides its role as a glycolytic enzyme, mammalian GPI can function as a tumor-secreted cytokine and an angiogenic factor (AMF) that stimulates endothelial cell motility. GPI is also a neurotrophic factor (Neuroleukin) for spinal and sensory neurons.

Subcellular location: Cytoplasm. Secreted.

Three antibodies: GPI-1, GPI-2 and GPI-3 were tested. All three antibodies were approved for IHC. GPI-1 was selected for full protein profiling.

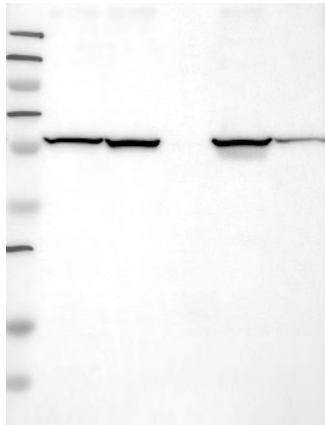
GPI-2 (CAB040564)



Immunohistochemistry

IHC protocol: HIER pH 6, Dilution 1:15000

IHC test staining: Ubiquitous cytoplasmic staining with high expression in, eg peripheral leukocytes, CNS (neuropil), leydig cells and fallopian tube.



Western blot

WB Size markers (kDa): 250, 130, 95, 72, 55, 36, 28, 17, 11

WB Lanes: Marker(1), RT-4(2), U251 MG(3), Plasma(4), Liver(5), Tonsil(6)

WB Target weight (kDa): 64, 63, 60, 56

WB Validation: Supportive - High specificity (no other antigen with signal >15%).