

CPTC-CD276-1 (CAB080014)

Uniprot ID: Q5ZPR3

Protein name: CD276_HUMAN

Full name: CD276 antigen

Tissue specificity: Ubiquitous but not detectable in peripheral blood lymphocytes or granulocytes. Weakly expressed in resting monocytes. Expressed in dendritic cells derived from monocytes. Expressed in epithelial cells of sinonasal tissue. Expressed in extravillous trophoblast cells and Hofbauer cells of the first trimester placenta and term placenta.

Function: May participate in the regulation of T-cell-mediated immune response. May play a protective role in tumor cells by inhibiting natural-killer mediated cell lysis as well as a role of marker for detection of neuroblastoma cells. May be involved in the development of acute and chronic transplant rejection and in the regulation of lymphocytic activity at mucosal surfaces. Could also play a key role in providing the placenta and fetus with a suitable immunological environment throughout pregnancy. Both isoform 1 and isoform 2 appear to be redundant in their ability to modulate CD4 T-cell responses. Isoform 2 is shown to enhance the induction of cytotoxic T-cells and selectively stimulates interferon gamma production in the presence of T-cell receptor signaling.

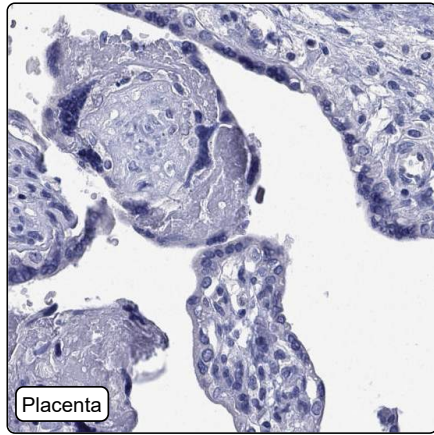
Subcellular location:

Membrane (*curator inference*) (Topo: Single-pass type I membrane protein (*curator inference*))

Protein existence: Experimental evidence at protein level

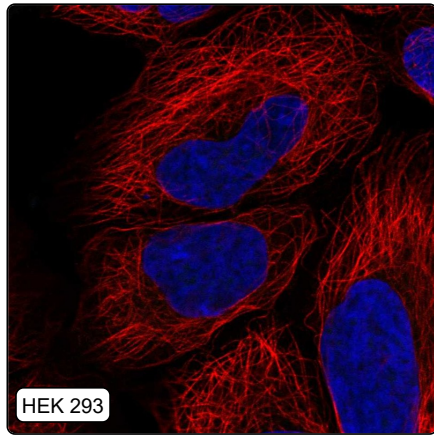
Comment:

Immunohistochemistry



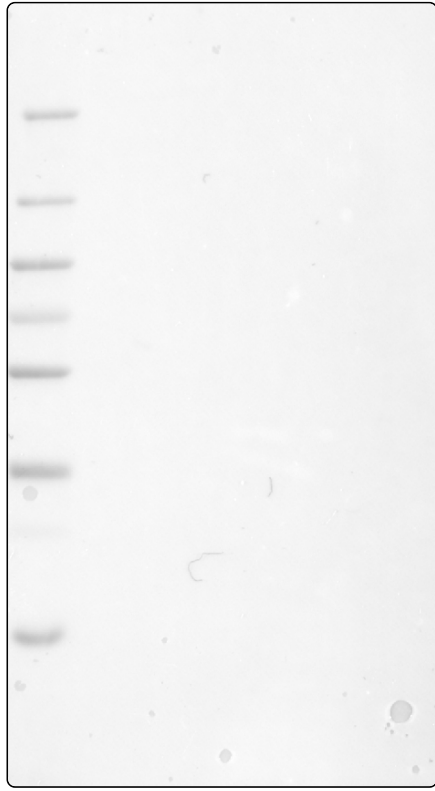
IHC protocol:	HIER pH6, Dilution 1:250
IHC test staining:	Negative in all tissues.
Literature conformance:	Not consistent with gene/protein characterization data
Literature significance:	Limited
RNA consistency:	Not consistent with RNA expression data
IHC Sibling similarity:	Other antibody shows dissimilar IHC staining pattern
IHC fail comment:	ANTIBODY FAILED: Negative

Immunofluorescence



IF Overlay:	antibody (green), anti-tubuline (red) and DAPI (blue)
IF main location:	
IF additional location:	
IF Antibody score:	Failed IF
IF in A549:	Negative
IF in HEK 293:	Negative
IF in U-2 OS:	Negative

Western blot



WB Size markers (kDa):	250, 130, 100, 70, 55, 35, 25, 15, 10
WB Lanes:	Marker (1), RT4 (2), U-251 MG (3), Plasma (4), Liver (5), Tonsil (6)
WB Target weight (kDa):	5, 14, 14, 14, 16, 17, 18, 21, 34, 34, 42, 57, 57
WB Validation:	Uncertain (No bands detected.)