

GSTM1-5 (638A70.1)

Protein: Glutathione S-transferase Mu 1

UniProt

Function: Conjugation of reduced glutathione to a wide number of exogenous and endogenous hydrophobic electrophiles.

Subcellular location: Cytoplasm.

Tissue specificity: Liver (at protein level).

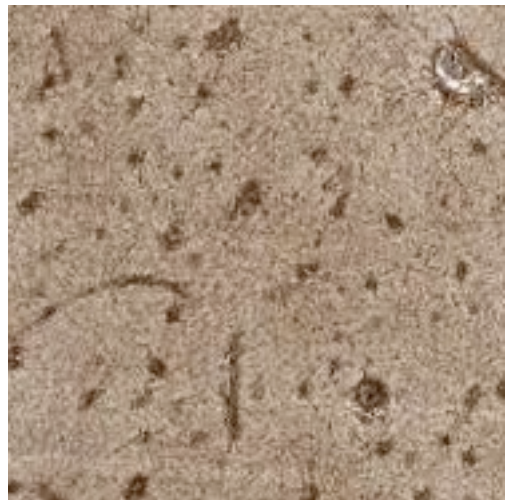
IHC protocol

HIER pH 6

Diluted 1:3000

IHC comment

Approved for IHC. Cytoplasmic staining, strongest in liver as suggested by literature . Strong staining also in testis and CNS, and additional weaker cytoplasmic staining in pancreas and kidney.



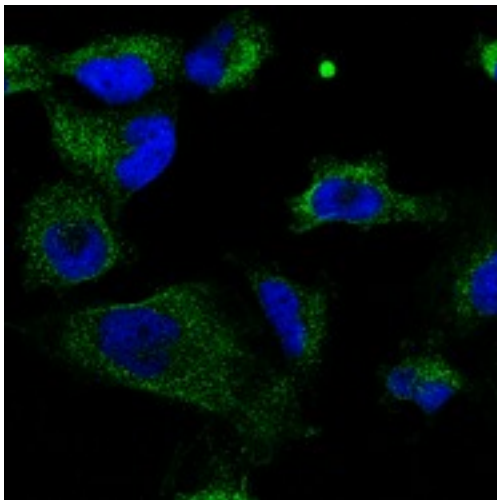
IHC. Cerebral cortex

Annotators comment

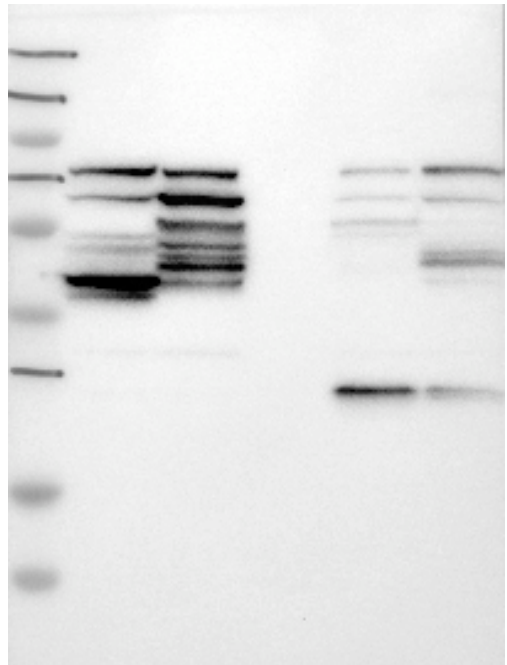
Moderate to strong cytoplasmic and nuclear positivity was seen in gastric chief cells, endocrine cells, subsets of renal tubules, testis, prostate, ovary, hepatocytes, adrenal gland and urothelial cells. Astrocytes in CNS were strongly stained. Few cases of breast, ovarian, liver, lung and urothelial cancers exhibited moderate to strong cytoplasmic and nuclear positivity. Remaining normal and tumor tissues were negative or showed weak staining.

GSTM1-5 (638A70.1)

Protein: Glutathione S-transferase Mu 1



IF. Celline: U251
Overlay – antibody and DAPI
Staining: Moderate
Localisation: Granular
cytoplasm or possibly vesicles



WB. Not supportive (Weak band of predicted size but with additional bands of higher intensity also present)